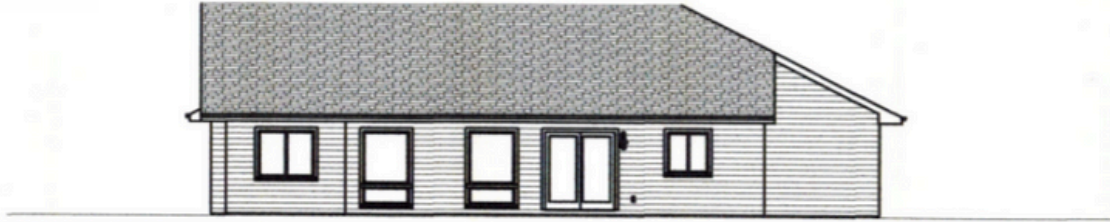
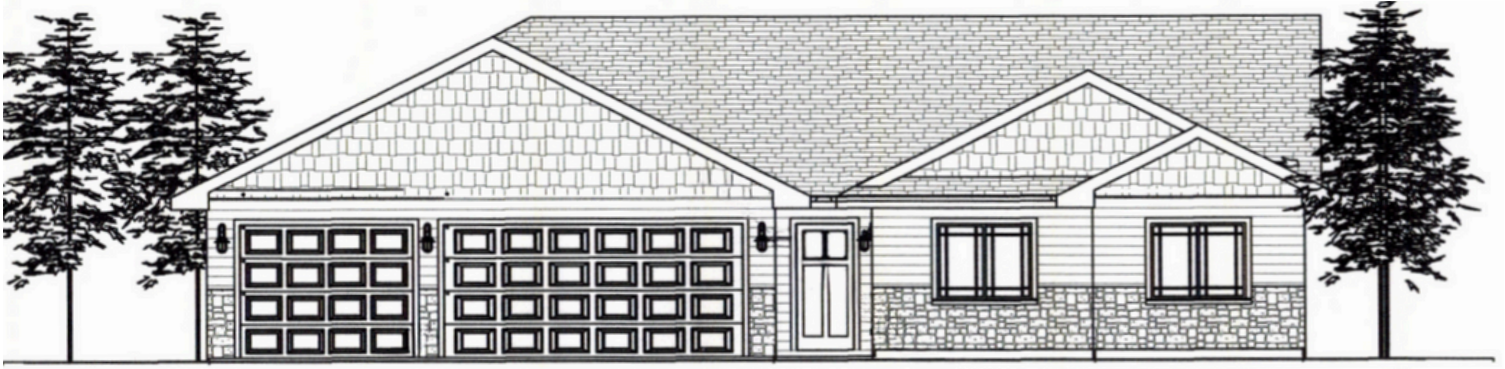




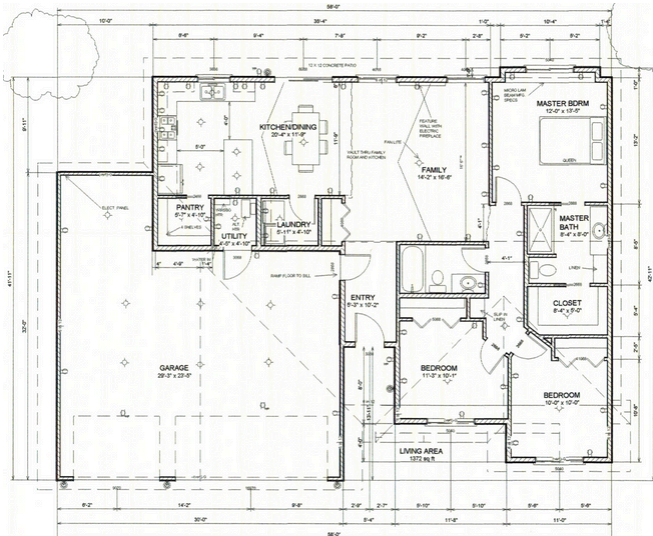
BUTTERNUT



PRICE INCLUDING LOT STARTING AT: \$395,000



PLAN FEATURES



- 3 BEDROOMS
- 2 BATHROOMS
- 12'X12' BACK PATIO
- 3 CAR GARAGE
- LIVING AREA 1,372 SQ FT
- OPEN LAYOUT
- PRIMARY BATH & WALK-IN CLOSET
- IN-FLOOR HEAT
- ON-DEMAND HOT WATER

**Floor plans and pricing are subject to change.*



DO NOT REPRODUCE THESE PLANS WITHOUT PERMISSION

GENERAL SPECIFICATIONS
ALUMINUM ROOF TRIM
VECTOR WINDOWS
VINYL SIDING
TIMBERLINE 30 ROOFING
MAIN LEVEL PLAN
SCALE: 1/4" = 1' 0" UNLESS NOTED

