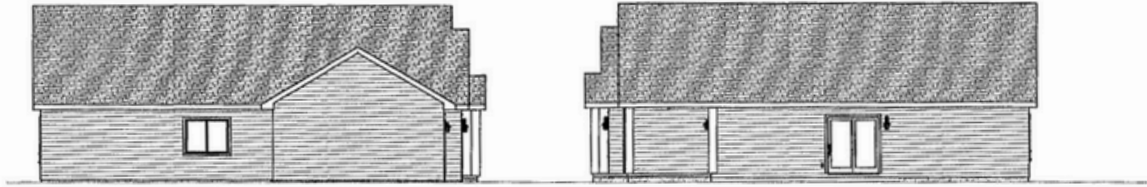




VERMILLION MODEL



PRICE INCLUDING LOT STARTING AT: \$370,000



PLAN FEATURES

- 2 BEDROOMS
- 2 BATHROOMS
- FRONT PORCH & SIDE PATIO
- 3 CAR GARAGE
- LIVING AREA 1,210 SQ FT
- OPEN LAYOUT
- PRIMARY BATH & WALK-IN CLOSET
- IN-FLOOR HEAT
- ON-DEMAND HOT WATER



**Floor plans and pricing are subject to change.*



MELBY HOMES, LLC

NORTH BRANCH, MN

PHONE: 651-277-6000

MODEL: VERMILLION MODEL 2024

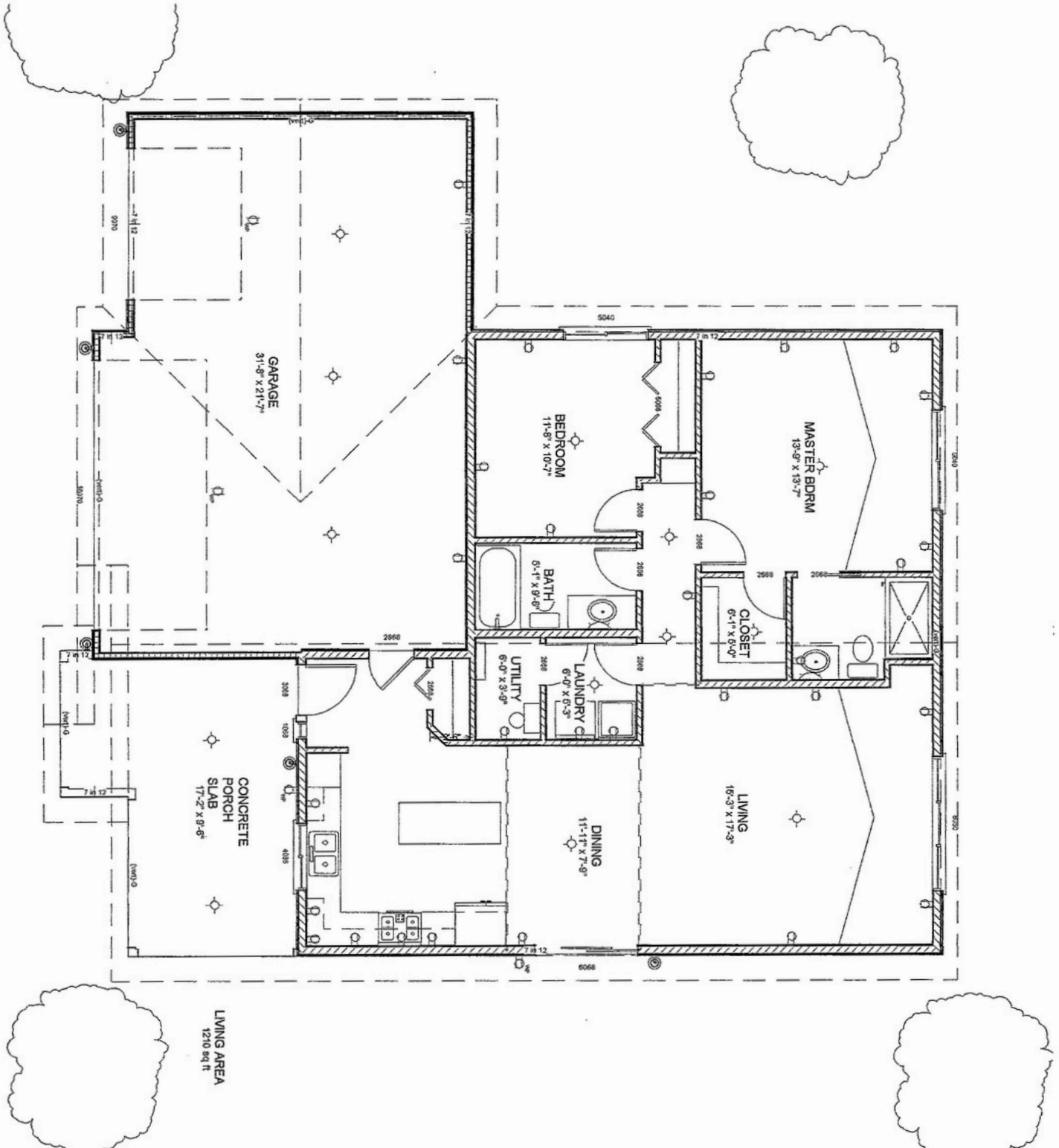
FINE QUALITY HOMES
SINCE 1978

DO NOT REPRODUCE THESE PLANS WITHOUT PERMISSION

1

SCALE: 1/4" = 1' 0" UNLESS NOTED

MAIN LEVEL PLAN



LIVING AREA
1210 sq ft