



PRESCOTT MODEL



SIDE VIEW



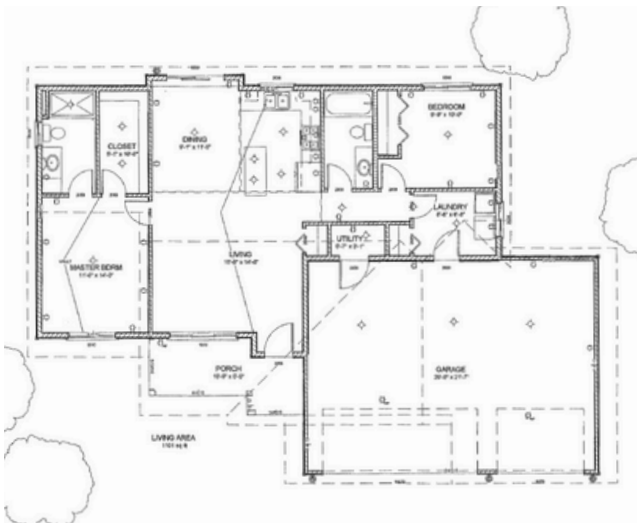
SIDE VIEWS

PRICE INCLUDING LOT STARTING AT: \$360,000



PLAN FEATURES

- 2 BEDROOMS
- 2 BATHROOMS
- FRONT PORCH & BACK PATIO
- 3 CAR GARAGE
- LIVING AREA 1,101 SQ FT
- OPEN LAYOUT
- PRIMARY BATH & WALK-IN CLOSET
- IN-FLOOR HEAT
- ON-DEMAND HOT WATER



**Floor plans and pricing are subject to change.*



DO NOT REPRODUCE THESE PLANS WITHOUT PERMISSION

MAIN LEVEL PLAN
SCALE: 1/4" = 1'-0" UNLESS NOTED

