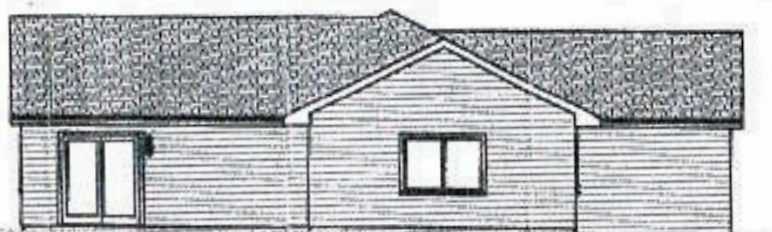




CHERRYWOOD

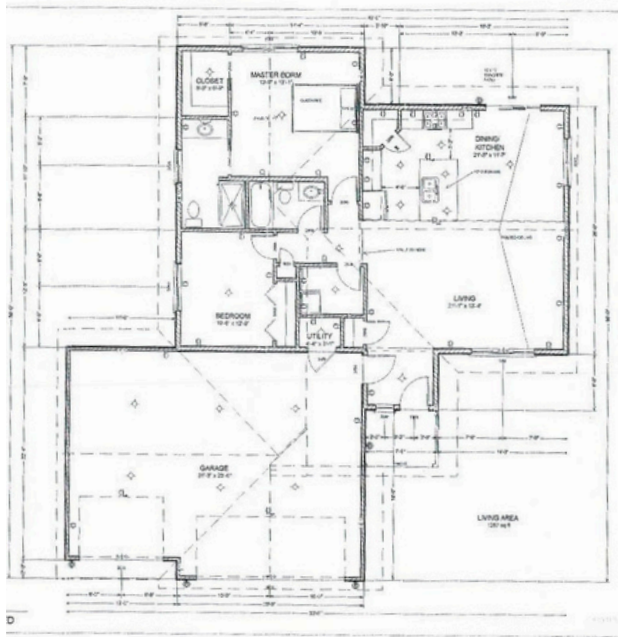


BACK VIEW

PRICE INCLUDING LOT STARTING AT: \$385,000



PLAN FEATURES



- 2 BEDROOMS
- 2 BATHROOMS
- 12' X 12' PATIO SPACE
- 3 CAR GARAGE
- LIVING AREA 1,267 SQ FT
- OPEN LAYOUT
- PRIMARY BATH & WALK-IN CLOSET
- IN-FLOOR HEAT
- ON-DEMAND HOT WATER

**Floor plans and pricing are subject to change.*



DO NOT REPRODUCE THESE PLANS WITHOUT PERMISSION

GENERAL SPECIFICATIONS

ALUMINUM ROOF TRIM

VECTOR WINDOWS

VINYL SIDING

TIMBERLINE 30 ROOFING

MAIN LEVEL PLAN

SCALE: 1/4" = 1' 0" UNLESS NOTED

